

FITTING INSTRUCTIONS

RP60 - Automatic Noise & Weather Seal



HOW TO FIT RP60

For single and double inward opening doors:

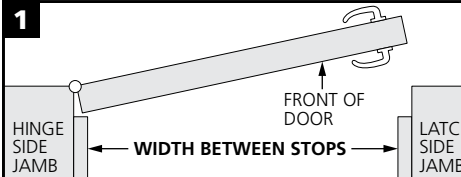
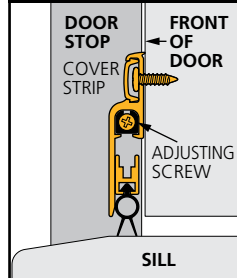
- Follow step 1, 2, 3, 4, 5, 6, 7.

For double doors:

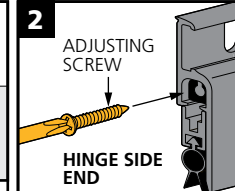
Buy 2 seals. Follow the steps but do not allow 2mm clearance on the latch sides of the doors in step 1.

Adjustment Note: If further adjustment is needed once installed, turn the adjusting screw half a turn at a time and test.

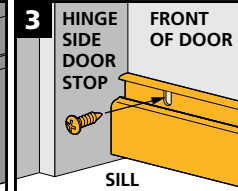
FIG.A (section view)



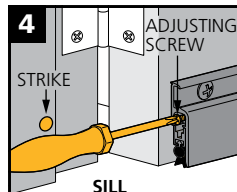
- Remove cover strip. With a hacksaw, cut RP60 at latch side squarely to width between stops less 2mm for clearance on latch side.
- Note:** If door is less than 750mm wide, trim equal amounts from each end to avoid mechanism damage. 450mm is the minimum operable size.



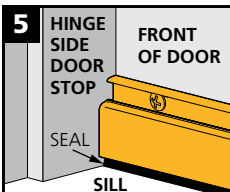
- Fit adjusting screw (the longest screw) by fully inserting in the hinge side end of RP60.



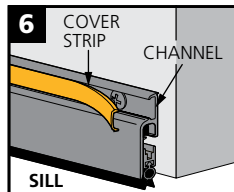
- With door closed, position RP60 level with door bottom and firm against hinge side stop.
- Screw fix.



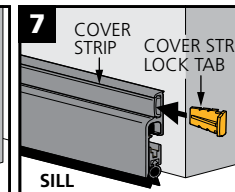
- Open door and withdraw adjusting screw two turns.
- For soft timber, fit thumb tack strike.



- Close door gently and observe action of RP60. Seal should engage sill lightly.
- Refer Adjustment Note.



- Cut cover strip to width of RP60.
- Fit cover strip in channel.



- Push in cover strip lock tabs at each end to hold cover strip. Tap in tabs flush with a small hammer.