

FITTING INSTRUCTIONS

RP2A - Brush Strip Door Seal

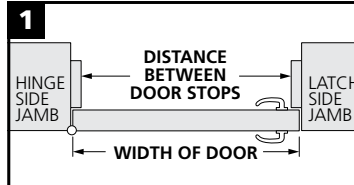
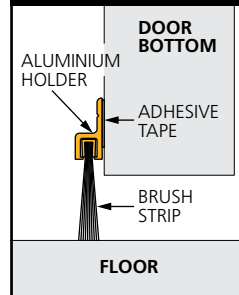


HOW TO FIT RP2A

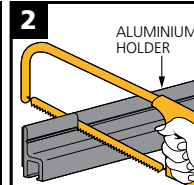
Note: For easy door operation, determine which side of the door the RP2A will function best. Brush strip should lightly engage the sealing surface and sweep smoothly across the floor. Uneven or ramped floors may cause the seal to drag. Recommended adhesion temperature is above 21°C. Allow a few days for full adhesion strength to occur.

- Seal can be fitted to the inside or outside of the door. Surface must be clean, smooth and if painted, well cured. *Note: Self-adhesive seals will not stick to oil-rub finishes.*

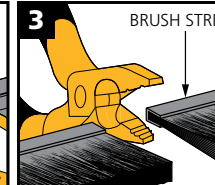
FIG.A (section view)



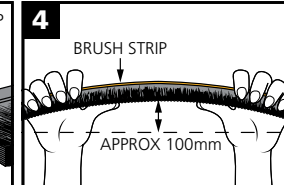
- Measure the side of the door you wish to fit the seal, either between the stops or the full width of the door.
- Slide out brush strip from aluminium holder (FIG.A).



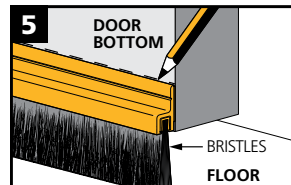
- With a hacksaw, cut aluminium holder to the required length.



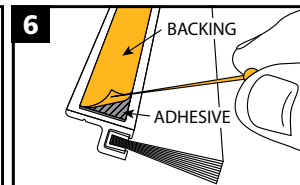
- Cut brush strip to length of aluminium holder with combination cutting pliers to lock in bristles.



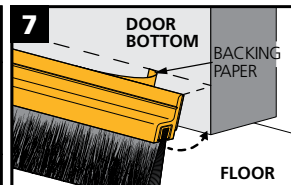
- Replace brush strip in aluminium holder.
- If the brush strip is loose, remove it, bend it and replace.



- Before removing backing paper, with door closed, place seal against door bottom and mark fixing position. Bristles should lightly brush the floor surface.



- Use a pin to carefully separate backing from adhesive.



- Very carefully position seal on marked line.
- When satisfied, firmly press seal to door surface.